



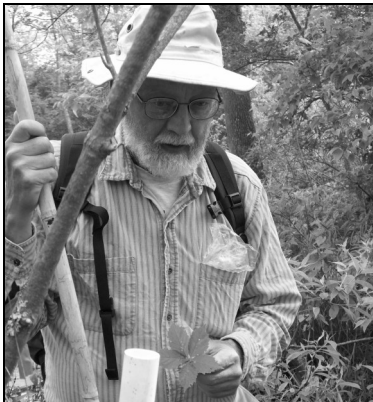
# BRASSnews

Newsletter of the Boquet River Association, Inc. | Winter 2010 Issue

## 2009 Annual Meeting

BRASS held its annual meeting Monday, December 7<sup>th</sup> at the Hand House in Elizabethtown.

Members approved the reelection of At-Large Board Members A.J. Longware of Lewis, Edward (Ted) Cornell of Essex, Jeff Kelly of Moriah, and Bob McGoldrick of Westport. Jeff Kelly and A.J. Longware completed respective terms as president and vice president. Their dedication and vision helped BRASS reach the 25 year marker. Vic Putman, of Willsboro, was welcomed to the board. Since 1978, Vic has worked for Essex County. Currently, he is the Director of the Essex County Department of Community Development and Planning. Vic will serve out the remainder of Libby Treadwell's term, who moved out West. The Board thanked Libby for her 18 years of dedicated service to the organization. She served as the Board Secretary and played a major role in BRASS's annual events, committees and publications. Her enthusiasm and involvement will be missed (see Libby's *Parting Thoughts*, page 5). New officers were also approved: President Anita Deming of Elizabethtown, Vice President Bryan Burke of Essex, and Secretary Megan Murphy of Elizabethtown. Officer Schelling McKinley, of Lewis, continues to serve as treasurer.



Dr. Kalma, photo by A.J. Longware

The first annual Friend of BRASS Award was awarded to Dr. Dennis Kalma for his countless contributions to the organization and the river. In addition to his position as director of the former BRASS Laboratory, Kalma analyzed water monitoring data, conducted studies of native mussels, embeddedness, riparian buffers, invasive species, and much more. He continues to provide important river and watershed information on the BRASS website and we look forward to working with him to gather data for the wetland monitoring program in 2010. The Association is pleased to recognize Dr. Kalma for his friendship and stewardship.

Executive Director Julie Martin gave a PowerPoint presentation of 2009 highlights and plans for 2010. Some 2009 accomplishments included seedling plantings along the river on the old Merriam Forge roadbed in Westport, Trashy Art Day in Willsboro, and completion of phase 1 of the culvert assessment project. BRASS also celebrated the Quadricentennial by working with Steven Kellogg to prepare historic Boquet River brochures (contact BRASS for a copy) and partnering with local organizations and historians to host 6 historic watershed tours. Plans for 2010 include facilitating the watershed management planning process, prioritizing and replacing culverts that block fish passage, and launching BRASS's updated website. Other plans include coordinating the annual tree and shrub planting and clean-up day as well as working with others to implement water quality improvement projects, like replacing the septic system at the Whallonsburg Grange Hall in Essex.



Illustration by Steven Kellogg

The Board also approved BRASS's 2010 budget which includes a new Special Projects budget line. These dedicated funds will enable the organization to contribute to priority pollution prevention projects in our watershed communities.

**BOARD OF DIRECTORS**

*(as of 2/08/2010)*

- Anita Deming, *President*
- Bryan Burke, *Vice President*
- Schelling McKinley, *Treasurer*
- Megan Murphy, *Secretary*
- Tom Clark
- Edward (Ted) Cornell
- Jay Fiegl
- Matt Foley
- Jeff Kelly
- A.J. Longware
- Bob McGoldrick
- Vic Putman

TOWN REPRESENTATIVES  
(APPOINTED)

- Doug Ferris - Willsboro
- Joel Harwood - Lewis
- Megan Murphy - Elizabethtown
- Gayle Perry - Essex
- Dawn St. Louis - Westport

**STAFF**

- Julie A. Martin  
Executive Director
- Emilie Stigliani  
Administrative Manager

Board Meetings are held on the first Monday of the month at 7:00 PM. Members are invited to attend. Call to confirm dates and location.

The BRASS newsletter is prepared by Emilie Stigliani with written contributions from the staff, Board, and others. All pictures were taken by the staff unless otherwise noted. The newsletter is edited by BRASS staff and Board of Directors of the Boquet River Association, Inc. We invite your submissions, inquiries, letters, and memberships.

Please submit to:

**info@boquetriver.org**  
**Boquet River Association**  
**P.O. Box 782**  
**Willsboro, NY 12996**  
**(518) 963-4710**

**Swimming and Paddling the Boquet River**

by Jeffrey G. Kelly



*Jeff Kelly has finished his three year term as president of BRASS and will remain on the board as a director-at-large. His successor is Anita Deming of Elizabethtown, a former executive director of BRASS.*

Let's pretend it's a hot day in the summer. Though I do like the winter, I miss swimming in the water, particularly the pure mountain water flowing down from Dix Mountain to the mouth of the Boquet River in Lake Champlain. That sandy delta with a gorgeous view across the Lake to the Green Mountains is perhaps the best place to be on a hot summer day, lollygagging in your canoe, kayak, or motor boat, up on a sandbar, the waves gently caressing your feet.

That's the last and largest swimming hole on the Boquet River. But upstream there are other smaller swimming holes that make the Boquet River special, besides the fact that it's the steepest river in New York State, with a vertical drop of 3000 feet in 47 miles.

The swimming hole highest in elevation on the Boquet, with a recognized name, is Shoe Box Falls. Now, this one I haven't been to, but I'm planning to go.

It's located on the north fork a short hike up from where the river crosses route 73, about a mile northeast of the intersection of routes 73 and 9, also known as Malfunction Junction. I'm told it's small and deep, six feet by three feet on the surface, and cold, even in the summer.

Downstream, heading towards New Russia, is the infamous Split Rock Falls. If you're there on a summer weekend, you won't be alone. It's a magnet for young daredevils, crazy kayakers, and swimming-hole buffs. It's basically a plunging two-tiered waterfall, with deep circular pools beneath each falls.

As we follow the pure water of the Boquet into the Pleasant Valley of Elizabethtown, The Branch flows in from the northwest off Hurricane Mountain. The Branch is sometimes called the Little Boquet and flows through town alongside Water Street. At flood stage it used to overflow and run on top of Water Street. On those occasions I enjoyed kayaking a few feet above the double line.

A half mile upstream from the stoplight, just before Water Street intersects with 9N is the swimming hole on The Branch called Us. It's just below a burst concrete dam. It's convenient with easy access. It's more for dipping in and cooling



Mouth of the Boquet, photo by Dave Kavner

off than jumping. This is a place I've taken my mother to.

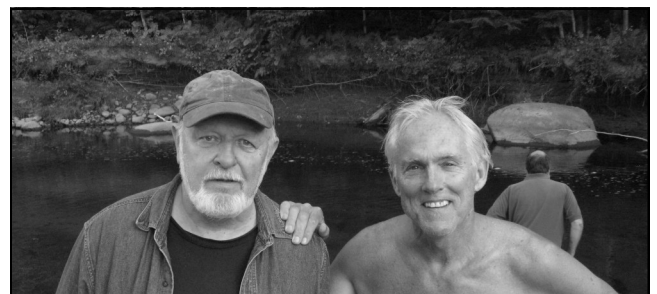
From the village of E-town to Brainards Forge Road and even onward to beneath the Northway is by far the best paddling for both canoes and kayaks anywhere on the Boquet during the spring run-off. The river flows calmly for about a mile, and then when you hear a distant roar as you round a bend and see Mt. Discovery, you'll be paddling constant class III whitewater - challenging but not dangerous. The best level is above two and a half on the gauge located underneath an abandoned bridge at the beginning of the E-town-Wadhams Road.

This whitewater run is called the Steele Woods section, named after a dirt road which parallels the latter part of the run. In the summer, the most relaxing, low key swimming holes that I've been to are located here and are popular with the students of the Meadowmount School of Music. The river gurgles by in a wide section which is at most, five feet deep located near a campsite off the Steele Woods Road. The students refer to one of the swimming holes, near the intersection of dirt roads, as the Four Corners.

If you are paddling you can continue past the Brainards Forge bridge in Class II water until you paddle under the Northway bridge and immediately come upon a Class III drop, directly behind an old farmhouse. You should run right to avoid the reversal wave on the left. It's also apparently a swimming hole. I ran this drop alone in the summer and surprised three young ladies skinny dipping in the eddy, who immediately dropped down, only their heads above water. I paddled onward without a word, and then turned my kayak around facing back upstream, and they all stood up with big smiles and waved. That was fun.

The next swimming hole downstream, which is a favorite of my friend Scott Gibbs, and seldom visited, is on route 10, the Lewis-Wadhams Road. It's uphill across from the Spaulding farm. The faint path into the woods starts near one of the two arrow signs marking the S-curve. This is a relaxed secluded spot with a rock outcropping that catches the afternoon sun.

The last spot before the dramatic falls of Wadhams is a splendid piece of land in the process of being donated to the public by Arthur Dodge of Westport. It's a sweeping bend in the Boquet near a bridge abutment, perfect for fishing and swimming. The donation is being facilitated by BRASS member Schelling McKinley. The location is two and half miles from the Wadhams bakery off route 10 at the end of a half-mile long dead end road. It's an unmarked seasonal road nestled in the woods, with the back of a stop sign facing the Lewis-Wadhams Road.



Edward (Ted) Cornell and Jeff at the Arthur Dodge swimming hole.

Downstream, however, the pure, clear water of the Boquet becomes cloudy in the oxbows of the farm country above Wadhams Falls. Beneath the route 22 bridge, immediately below the falls, is a deep sluice which I've seen teenage boys jump or swing into from a rope attached to the underside of the bridge.

The popular and final swimming hole that I'm familiar with is called Little Falls. It's next to the railroad tracks near the end of Merriam Forge Road close to route 22. It's a great place to jump with a sandy beach and a strong current to practice swimming against. BRASS has played a part in keeping the shores of Little Falls clean and free from trash. During our annual Trashy Art Day we always comb the banks of the Little Falls area, each year finding less litter.

---

## **BRASS's History and Future:** *As seen through the eyes of Anita Deming*

---



Incoming president, Anita Deming, is a busy woman. This is clear upon entering her office at Cornell Cooperative Extension where she is the executive director and an agriculture and natural resource issue leader. Her desk is piled high with papers, the floors are covered with maps, and one wall is lined with bulky filing cabinets. Sitting in the midst of what seems like a mountain of work, she is calm, cheerful, and extremely organized. As we speak about past BRASS projects, she goes to a filing cabinet and scans the drawer for just a second before she pulls out a 1998 report about the Boquet. For years now, Anita has been an active steward of the river.

### **When did you first get involved with BRASS?**

In 1981, a group of us coordinated and facilitated meetings around the area to discuss and share concerns about the Boquet. Based on those meetings, we came up with a list of priorities. We wanted to address failing septic systems, flooding, and erosion. We also knew that we wanted to learn more about the river. The idea to form the Boquet River Association came out of those meetings.

When BRASS got started, I had just had a baby. I was looking for part-time work and BRASS was awarded a grant to hire an employee. They didn't call me the executive director at the time, but that's kind of what the job turned out to be.

“My favorite BRASS project was the log ladder we put up in E-town. It wasn't very expensive, but it *really* worked.”

### **What other roles have you had in the organization?**

Well, after I left the director position, I waited a few years to get back on the board. Since returning I've held a number of different offices, including president.

### **What was BRASS doing the last time you were president?**

We did a lot of bank control projects. We built a retaining wall, made cribs, and planted a lot of trees. We also helped get fencing for farmers to keep their cattle out of the river.

### **What part of BRASS's legacy are you most proud of?**

It's the citizen involvement that is really important to me. BRASS is an example of why I love the Adirondacks. I feel really connected here. I love living in a place where people care. People do something about the problems they see. When a project needs to be done, everyone pitches in.

### **What do you see as BRASS's role today?**

BRASS's role continues to be implementing projects on the river to reduce potential impacts, working with fisheries, and educating the public. We help the river, the watershed, and the communities and their economies. They are all connected. Our work has a big role to play in the area.

### **What future goals/hopes do you have for BRASS under your presidency?**

As BRASS completes the watershed management plan, it will have a set of priorities on the shelf ready to go. I see us being the “do it” organization that helps implement change. I would like to identify continued sources of funding to implement projects. I hope we can then share our results and progress by putting up articles and pictures on our website.

## Parting Thoughts

By Libby Treadwell



*Our beloved long-time board member, Libby Treadwell, is leaving us for sunny California skies after many years of dedicated service. Her departure is a true loss for our organization, but we are happy to know that another community will benefit from Libby's many talents, as we have. Below, she shares some parting thoughts.*

If bread is said to be the staff of life, a river is the magic wand that creates it; changeless in being there, constantly changing. Then there's the fun stuff, the fishing, canoeing, swimming, bird watching, listening...

It didn't take me long to notice that the Boquet covers the length and breadth of Essex County and offers everything, including contradictions—as well as the opportunity to watch lamprey-scarred salmon maneuvering the fish ladder in Willsboro.

I heard of the Boquet River Association through Bill Johnston and Anita Deming, then learned from Matt Foley that they needed water samplers. I became a member, volunteer, and soon longtime Westport Supervisor Don McIntyre appointed me Westport Town Representative to the BRASS board.

Robin Ulmer had just become director. I'm not sure how many years ago that was, time rolling by like a river, but now it's time for me to change my shoreline. It's been a true delight to have been involved with an organization that has never worked for or against, rather always worked *with* others—through partnerships with landowners, colleges, other groups in the watershed, around the state, and even across the lake. BRASS held a Bio-blitz as an annual meeting long before that coined word became a familiar term.



Projects I've been involved with include macroinvertebrate and phosphorus studies, removal of river debris (for building of sculptures in the annual, Ted Cornell-judged Trashy Art Contest) and invasive species (and the delicious discovery of garlic mustard bruschetta), creation of a board game for the schools, planting of seedlings and black willows along eroded banks.

Sadly, not enough Essex County residents are aware of this association despite such river awareness outreach as Rambles, summer filmmaking courses and digital photography opportunities with Nathan Farb. Those who do know the organization know it has always been respected as a responsible advocate of the riparian environment on which we all, sooner or later, depend.

I regret leaving, but have faith that under current director, Julie Martin, BRASS will continue its search for new ways to help support the ecology of the Boquet River and the social fabric it weaves together.



Fish Ladder in Willsboro

***The Boquet River Association (BRASS) is a grassroots, membership-based, volunteer-oriented organization dedicated to enhancing the quality of water and life in the Boquet River watershed. Formed in 1984, BRASS uses a collaborative, non-regulatory approach to watershed management.***

---

## GRANT & PROJECT UPDATES

---

### **NYS Empire State Development Corporation Grant**

*Long-Range Planning* - BRASS is working with former, long-time Executive Director Robin Ulmer to review past project files and develop project summary sheets. Project sheets will summarize the purpose of each project and other pertinent information, like whether the project merits revisiting. Such analysis of past projects is expected to aid BRASS in its long-term priorities. We are delighted to be working with Robin, as her institutional knowledge and history is invaluable.



Julie Martin and Robin Ulmer

*Wetland Monitoring Project* - BRASS is excited to work with Dr. Dennis Kalma to gather vegetation and hydrology data on 20 wetlands in the Boquet River watershed in 2010. Data was collected on 40 sites in 2006 and 20 sites in 2007, with little monitoring done in 2007-2008. Information collected will provide an assessment of the health of the wetlands and whether action needs to be taken. Wetlands are vital to the health of our river as they filter stormwater, provide rich wildlife habitat and fish spawning areas, as well as flood control by storing rain and slowing runoff.

### **NYS Department of State (DOS) Grant**

*Watershed Management Plan* - In November, the Town of Westport received an executed contract from the DOS for funds to update the Boquet River Watershed Management Plan. In December, the Town and BRASS entered into a Memorandum of Agreement. BRASS will manage the three-year contract and facilitate the process on behalf of the Town. We look forward to working with local stakeholders and the Adirondack Watershed Institute at Paul Smith's College to initiate this important project (see back page).

### **Environmental Protection Agency (EPA) Grant**

*Whallonsburg Grange Project* - The Whallonsburg Grange Hall, located in the Town of Essex, is a popular, year-round community center that provides many benefits to residents and visitors throughout the Boquet River watershed. The Hall is used for concerts, workshops, lectures, meetings, and fitness programs. The current septic system servicing the Grange Hall is very old, undersized, not functioning properly and in need of replacement. To date, BRASS has secured \$4,707 from an EPA Targeted Watershed grant awarded to the Champlain Watershed Improvement Coalition of NY (CWICNY) to help offset the cost of a new system.



*Fencing Project* - \$5,000 of EPA grant funds have been allocated to purchase and install ~3000 feet of fencing, two 8-foot gates, a 12-foot gate and a stream crossing on a farm in the Boquet watershed. By keeping cows out of tributaries, hardening crossings and establishing a vegetative buffer, this project will reduce the amount of pollutants, like sediment and manure, entering the Boquet River and ultimately Lake Champlain.

---

## ORGANIZATIONAL EFFECTIVENESS

---

**Below are some organizational improvements initiated and accomplished in 2009.**

### *Financial Management and Investments*

- Acquired and learned QuickBooks Premier Nonprofit Edition 2009 software to improve financial and time management.
- Purchased Certificate's of Deposit with a better interest rate and staggered their maturity dates. This reserve helps ensure BRASS's long-term financial stability.
- Received two donated color printers, ink and a wireless mouse from board members Schelling McKinley and Gayle Perry. Thank you!

### *Information Management*

- Revamped our membership database to create a more manageable document. Thanks to a dedicated volunteer, we also increased the number of contacts we have along the river.
- Produced a BRASS How-To Manual that outlines administrative tasks to help ensure consistency. This document is updated on a regular basis.
- Established an email list to share information in a timely and cost effective way. Contact us if you'd like to be added to our email list.
- Approved Conflict of Interest and Document Retention policies to comply with IRS requirements.

### *Networking and Publicity*

- Invited to serve on the Willsboro Visitor Interpretive Center committee recently formed by the Town.
- Scheduled 'needs assessment' meetings with our local town supervisors to learn more about ongoing and planned projects in their communities and improve coordination and communication.
- Ordered BRASS hats to raise awareness about our organization. Thank you to a long-time member and supporter for purchasing the first dozen! They were such a hit that we ordered an additional two dozen. If you'd like a hat, please contact us. Although not for sale, we welcome a \$20 donation.
- Published in the Press Republican (PR) on Jan. 18, 2010. As stated in the Cheers section, "Volunteers such as these environmental stewards are our communities' greatest assets." Cheers to the PR for recognizing BRASS's role in the watershed.
- Attended a Social Marketing workshop sponsored by the Lake Champlain Basin Program (LCBP). Registration and travel fees were covered by a LCBP mini-grant.



## Wild River: Art Meets Education and Fundraising

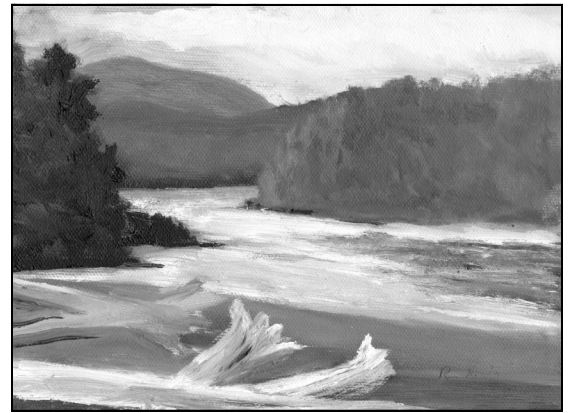


Opening Reception , photo by Beverly Eichenlaub

Premises Storefront Gallery in Essex coordinated with BRASS to present Wild River, an invitational art exhibit and fundraising event to support BRASS’s watershed improvement efforts. Local artists - Jill Schoenfeld, Roderick MacIver, Rob Ivy, Rachel Finn, Betsy D. Stewart, Liz Wilson, Gary Randorf, Ellen Few Anderson, Shelle Bailey, and Kevin Raines - created artwork that highlighted the river’s natural beauty. The exhibit was on display September 11 through October 10 and, thanks to the artists, 100% of the sales went directly to support BRASS’s mission.

The opening reception, held September 11, attracted more than 50 people. According to Beverly Eichenlaub, gallery co-owner, it was their most well-attended opening of the summer. Art lovers and BRASS supporters mingled while viewing the paintings, collages and photographs. Those unfamiliar with BRASS had the opportunity to meet BRASS staff and board members and take home newsletters and brochures. Executive Director Julie Martin said, “I was very impressed by the quality of artwork contributed and the public response to the exhibit. The opening event allowed us to reach out to a diverse audience and raise awareness about our work.”

Thank you to gallery owners Beverly Eichenlaub and Bryan Burke for coordinating and hosting the event and BRASS board members who provided refreshments for the exhibit’s opening day. We are so appreciative of the artists for creating and donating their work to celebrate the river and support our mission.




Boquet in Winter by Rob Ivy, photo by Beverly Eichenlaub

## Field, Forest & Stream Day

On September 26, the Boquet River Association had an educational booth at Field, Forest & Stream Day in Elizabethtown. BRASS held a *Boquet Basket* raffle that was orchestrated by A.J. Longware, with contributions from the board. The basket was filled with river-related items, including an article about the history of the name Boquet. Congratulations to Shami McCormick for winning the basket, and a big thanks to everyone who purchased tickets.

Thank you to A.J. Libby and Carrie Treadwell, Megan Murphy, Bob McGoldrick, Anita Deming and Jeff Kelly for contributing time and resources to make this event possible. Field, Forest & Stream Day is a great opportunity to network with other organizations and raise awareness about BRASS’s efforts.

<p><b>The Boquet River Association</b>  <i>"The River Connects Us"</i>  <a href="http://www.Boquetriver.org">www.Boquetriver.org</a></p>		<p>What's your opinion?</p> <p><input type="checkbox"/> Boquette   <input type="checkbox"/> Bouquet   <input type="checkbox"/> Boquet</p>
		<p>Name _____</p> <p>Address _____</p> <p>Town, City, State, Zip _____</p> <p>Phone _____</p> <p style="text-align: right;"><input type="checkbox"/> YES, I'd like to receive information about BRASS</p>
<p>History of the Name                  A 1732 map identifies the river as R. Boquette meaning a trough in old French. Around 1777 it was referred to as the Bouquet, which is attributed to the presence of British Colonel Henry Bouquet who fought in the area. Recent evidence indicates that it is actually Boquet, named after a French Jesuit Charles Boquet, who was a Canadian guide and interpreter that worked along the Hudson and Lake Champlain in the mid 1600's.</p>		
<p>Boquet Basket Raffle Tickets \$1 or 6 for \$5</p>		



## Watershed Stats

Boquet River Watershed	275 sq mi	
Boquet River Subwatershed	174 sq mi	63%
North Branch Subwatershed	101 sq mi	37%

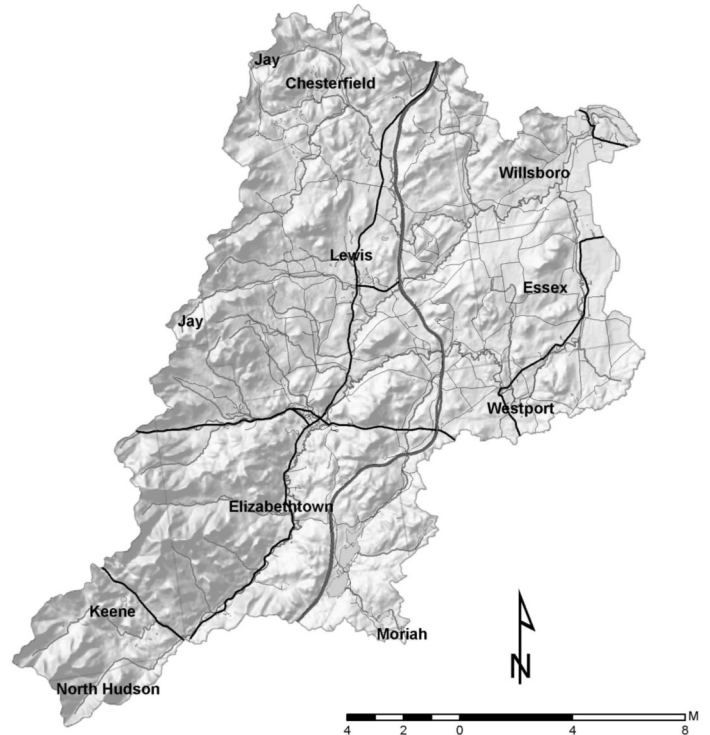
Boquet River Length	47 miles
North Branch Length	20 miles

Total Watershed Streams      674 miles

Total Roads                      401 miles

### Watershed Municipalities

Lewis	81.2 sq mi	29.5%
Elizabethtown	76.3 sq mi	27.7%
Keene	23.7 sq mi	8.6%
Essex	22.8 sq mi	8.3%
Willsboro	21.6 sq mi	7.9%
Westport	21.3 sq mi	7.7%
Chesterfield	19.3 sq mi	7.0%
North Hudson	4.6 sq mi	1.7%
Jay	3.8 sq mi	1.4%
Moriah	0.4 sq mi	0.2%

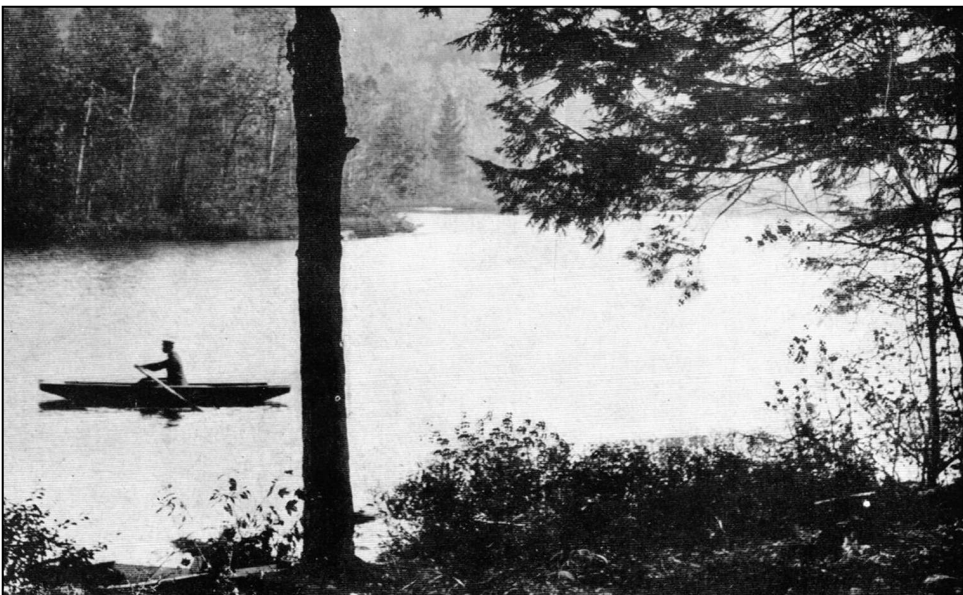


Data and map provided by the NYS Department of Environmental Conservation.

*The Boquet River flows from Dix Mountain in Keene and winds through forests, villages and farmland before emptying into Lake Champlain at Willsboro. The watershed, located in Essex County, is entirely within the Adirondack Park.*

## Where along the Boquet?

by A.J. Longware



You have probably driven by the view pictured on this old postcard dozens (perhaps hundreds) of times, only to catch a glimpse of it. This small body of water feeds the Boquet slightly northeast of Roaring Brook.

**Answer:** This is Little Pond, elevation 1075', location 44°11'5.85" N, 73°34'26.86"W, which is 4 miles south of Exit 31 off I-87. You can see an aerial view of the pond on Google Earth Fly To. Simply search Little Pond, Elizabethtown, NY 12932.

## BRASS MEMBERS AND DONORS 2009-2010

Membership Year: June 1, 2009 - May 31, 2010 (as of 1/12/2010)

**Thank you to our generous members and donors.**

Janice Allen	Joel Harwood & Family	Bradley Paye
Ellen Few Anderson	Christina Coyne & Fanning Hearon	Gayle Perry
Anonymous	Judith F. Heintz	Jamie Phillips
Bartlett & Isabelle Bailey	James J. Higgins	Michael E. & Cynthia L. Pratt
Nick & Eve Bailey	Brian & Katherine Houseal	Alan Hipps & Jane Preston
Shelle Bailey	Wallace J. Huston	Seymour Preston, Jr.
William T. Baker, Jr.	Arlene D. Ida	Victor & Vickie Putman
Paul & Cherry Bamberg	Ms. Francisca Irwin	Patricia Quinn
Larry Barns	Robert & Amy Ivy	Kevin Raines
Rudolph Beardsley	Lloyd James	Gary Randorf
Jim Kinley & Mary Bell	Robert Jeffrey	Elizabeth Rapalee
Tim Biello	Sally P. Johnson	Sue & Clayton Reaser
Mr. Elie J. Bijou	Wayne & Susan Johnson	David & Margaret Reuther
Katharine Preston & John Bingham	William & Meredith Johnston	James & Mona Rice
Mr. & Mrs. Robert Bradbury, Jr.	Deb & Ellis Jones	Peggy Rising
Anthony C. Brankman	Dr. Charles E. Jones	Charles & Pamela Samul
Ben & Anne Brewster, Jr.	Elizabeth Jones	Arthur V. & Harriet Savage
Marcia P. Brooks	Alice Wand & Dr. Dennis Kalma	Eileen Scharwath
Peter R. Brooks	Jim & Theresa Kapper	Denise Scheinberg
Stephen C. Brooks	Dave Kavner	Jill Schoenfeld
William P. Brooks	Mark Levy & Celine Keating	John Doyle & Laura Sells-Doyle
Alan & Marion Brown	Steven & Helen Kellogg	Glenn Shafer
Mary Nell Bockman & Andrew Buchanan	Linda Smyth & Jeffrey Kelly	John J. Sheldrake
Mark J. Buckley	Mary Lu Kirsty	Steve & Melissa Shepstone
Beverly Eichenlaub & Bryan Burke	Jeffrey R. Kleiman	Dr. Frank C. Shirley
Tim & Mary Burke	Philip & Eileen Knowles	Peter & Mary Anne Shultz
Paula J. Calkins	Donald Wulbrecht & Juliana Koenig	Bob & Roberta Silliman
Bonnie Callahan	Joseph Kozma	Elinor M. Siner
Charles W. III & Margaret Cammack	Ruth Kuhfahl	Suzanne Skidmore & Marc Skarshinski
Dean & Claudia Caveney	John & Myrtle Lally	Rolf Skoglund
Cindy Dunbar & Charlie Cerf	Richard & Sally Lighty	Gerald W. Smith
Dr. Gary C. Chilson	Cynthia Fairbanks & Joan Lilly	Paul Smith
Audrey & Arthur Conklin	Daniel & Kathleen Lincoln	Donna Lou Sonnett - <i>Cupola House Gallery</i>
William M. Conway	Brad Caldwell & Alta Jo Longware	Jodi Browning & C.G. Stephens
Edward Cornell - <i>Crooked Brook Studios</i>	Melvin & Gretna Longware	Betsy D. Stewart
Michael & Laurie Davis	Nils & Muriel Luderowski	Dick & Pat Swire
Robert & Mary Davis	Roderick W. MacIver	Robert L. Thall
Marc Atz & Bobbi Degnan	Alvin Macomber	Sylvia Thorn
Anita & John Deming	Regis Canning & Doreen Maddox-Canning	Betsy & David Tisdale
Therese Denton	Happy & Jim Marsh	Langka Domberger & Zach Treadwell
Stanley Dickinson	Jamie Martin	Sandy & Libby Treadwell
Sarah & George Disney	Joe Martin	Kip Trienens
John Redsky Doyle	Gina Martin	Newman & Frances Tryon
Nancy B. Sinkoff & Gary Dreibratt	Stephen Maselli	Robin & Al Ulmer
Tom Duca	Nina & Ray Matteau	Jim & Colleen Van Hoven
Mary Dulac-Reynolds	Shami & Dan McCormick	June & Steve Van Nort
Eva M. Eaton	Bob & Elaine McGoldrick	Dorothy Voorhis
Lew & Mary Jane Egglefield	Schell & Annie McKinley	Nancy Wilson & Bob Wagner
Cara M. Eisle	Robert W. McShane	Eugene E. Webster
John D. Ferree	Constance A. Miller	Katherine & William Wellman
Douglas R. Ferris, P.E. - <i>Zebra-Tech LLC</i>	Clorinda Moore	Peter & Polly White
Jay & Kristin Fiegl	Jeanne Morrison	Kathleen Wiley
Rachel Finn	Thomas & Suzanne Morse	Liz Wilson
Matt Foley	Kathy Kelley & Paul Mudie	Michael Yamane
Richard & Susan Frisbie	Thomas F. Mullen	Mark & Pola Yolles
Walter & Augusta Gladding	Nick & Carol Muller	
Morris & Ellin Glenn	Eric K. Teed & Megan Murphy	<i>Adirondack Council</i>
Rachel Hunter & David Goldwasser	Lauren Murphy	<i>Adirondack Garden Club</i>
Louise Gregg	Mareva Nettles	<i>Champlain National Bank</i>
Paul Grinwis	Christopher E. Neuzil	<i>David and Candace Weir Foundation</i>
Cindy Brown & Bruce Haag	Edmund D. Northup	<i>Long Pond Cabins</i>
George & Janice Hainer	Thomas Oehlbeck	<i>Missisquoi River Basin Association</i>
Darcey Hale	K & J O'Flynn	<i>Patagonia</i>
William & Marsha Harbison	Peter S. Paine, Jr.	<i>Premises Storefront Gallery</i>
Bob & Carole Harsh	Jeanne Fallon & John W. Pangburn	<i>Rogers-Carrol Family Foundation</i>
Jeb Hart	Edward & Meredith Parsons, Jr.	<i>The Mountaineer</i>

**Thank You County and Towns!**

BRASS thanks **Essex County** and the Towns of **Essex, Elizabethtown, Lewis, Westport and Willsboro** for their continued support of our efforts to enhance the quality of water and life in the Boquet River watershed.

Your support is critical to our success.

**Annual Appeal Update**

Thank you for your generous response to our 2009 Annual Appeal. So far, we have raised more than \$9,000.

For the benefit of our members and donors, we want to clarify our Annual Appeal, which is a request for an additional donation, above and beyond your membership dues. *(BRASS's membership year runs from June 1<sup>st</sup> to May 31<sup>st</sup>.)*

For those who responded to our 2009 Annual Appeal letter and marked membership dues on the remittance envelope, we honored your request and put your contribution towards your 2010/2011 membership, which runs from June 1, 2010 to May 31, 2011. We will print a campaign-specific envelope to accompany the 2010 Annual Appeal request.

Thank you for supporting our watershed improvement efforts. Our work is not possible without you.

**WATER TESTING**

Total Coliform and E. Coli testing bottles, provided by Life Science Laboratories, are available at the BRASS office in Willsboro, Dogwood Bread Company in Wadhams, Cornell Cooperative Extension in Westport, and local Town Halls. Contact BRASS in advance to find out which bottle to use. For more technical questions, contact Life Science Laboratories at (315) 388-4476. Once you have your sample, keep it cool and **bring it to the Elizabethtown Town Hall any Tuesday morning by 9:30 AM.** For those individuals and communities who find it more convenient to drop samples off in Plattsburgh, contact Endyne Lab to arrange for bottles and testing at (518) 563-1720.

Please make checks payable to the Boquet River Association. In most instances, your membership is fully tax-deductible as a charitable contribution.

**MEMBERSHIP FORM**

**CIRCLE ONE:**

New member

Renewed member

Updated information

Name \_\_\_\_\_

Local Address \_\_\_\_\_

Email \_\_\_\_\_

City \_\_\_\_\_ State \_\_\_\_\_ Zip \_\_\_\_\_

Local Phone \_\_\_\_\_ Winter Phone \_\_\_\_\_

Winter Address \_\_\_\_\_

\_\_\_\_\_ Atlantic Salmon \$50  
 \_\_\_\_\_ Brown Trout \$35  
 \_\_\_\_\_ Speckled Trout \$25  
 \_\_\_\_\_ Minnow \$10

Winter City \_\_\_\_\_ State \_\_\_\_\_ Zip \_\_\_\_\_

Please complete and return this form to:

Boquet River Association

P.O. Box 782, Willsboro, NY 12996.

Updated information may also be emailed to:

info@boquetriver.org



**BRASS**

Boquet River Association, Inc.  
3743 Main Street  
P.O. Box 782  
Willsboro, NY 12996

Non-profit Org

US Postage

PAID

Burlington, VT

Permit 165

Newsletter of the Boquet River Association, Inc. | Winter 2010 Issue

BRASS is a grassroots non-profit organization dedicated to enhancing the quality of water and life in the Boquet River watershed.

### Looking for Answers...

According to the NYS DOS's Division of Coastal Resources, "a successful watershed management plan is informed by available data and driven by consensus. It answers a series of questions as it guides the protection and restoration of a community's water resources. That is, why the watershed plan is needed; where the existing problems, threats, and opportunities are located; what actions and projects are recommended to address the problems and threats and to take advantage of the opportunities; when the recommendations will be advanced; who will take the lead in making it happen; and how much it will cost to implement the plan." Answering these questions helps us be more competitive in securing grants to accomplish our shared goals.

Tel./Fax. 518.963.4710

[info@boquetrivier.org](mailto:info@boquetrivier.org)

[www.boquetrivier.org](http://www.boquetrivier.org)

Newsletter of the Boquet River Association, Inc. | Winter 2010 Issue