



BRASSnews

Newsletter of the Boquet River Association, Inc. | February 2009 | Winter Issue

BRASS is 25! *Looking Back and Planning Ahead*

In 1983, the Adirondack Park Agency suggested to the National Park Service that the people living in the Boquet River Watershed might be interested in creating an action plan to protect the river. In response, public meetings were held and there was strong support for a plan for the watershed. A collaborative process followed with more than 100 individuals providing input to the plan. Advisory committee members included landowners, local, county, state, and federal agencies, as well as other Adirondack organizations. The “*Boquet River Study*” Final Report, prepared by the Department of Interior’s National Park Service was completed in September, 1984.

The first half of the 36-page document contains an introduction, background information and major findings. The second half of the report lays out the *Boquet River Action Plan* including six goals the advisory committee determined were required to enhance the quality of both water and the communities within the Boquet River basin. One of the most important goals was to create an association with a **non-regulatory, cooperative approach** to watershed management. The Boquet River Association (BRASS) was organized shortly after this report to serve the watershed towns of Elizabethtown, Essex, Lewis, Westport, and Willsboro. Its Board of Directors is composed of appointees from these five towns, as well as At-Large Directors elected by the membership.

Anita Deming, Jeff Kelly, and Matt Foley were among those serving on the *Study’s* Advisory Committee. All

three are still very much involved with the Boquet River Association and are current At-Large Directors providing organizational oversight, continuity, and direction. Anita was the first Executive Director of BRASS and helped build the organization’s structure that we still work from today. Jeff is the current Board President, and Matt, a past President, has served more time on the board than any other director. BRASS is fortunate to have their continued support and, importantly, their institutional knowledge.



Because much has changed since 1984, we are beginning the process of updating our organization’s Strategic Plan. The strategic planning process is an important tool for organizations operating in a rapidly changing environment. In early 2009, the board and staff began a

SWOT analysis where we brainstormed BRASS’s internal strengths and weaknesses, and its external opportunities and threats. By doing so, the staff and board will have a better, more unified understanding of where BRASS needs to improve and what opportunities we should pursue. The ultimate goal of the planning process is to promote the organization’s growth, effectiveness, and long-term financial stability, while clarifying BRASS’s unique role in the watershed. The Strategic Plan to be developed will include our short and long term goals, specific and measurable objectives to achieve, as well as the tasks/activities and timelines necessary to guide the BRASS staff’s efforts.

See a list of BRASS’s accomplishments on page 2.

BOARD OF DIRECTORS

(as of 1/1/09)

Jeff Kelly, *President*

A.J. Longware, *Vice President*

Schelling McKinley, *Treasurer*

Libby Treadwell, *Secretary*

Bryan Burke

Tom Clark

Edward (Ted) Cornell

Anita Deming

Jay Fiegl

Matt Foley

Bob McGoldrick

TOWN REPRESENTATIVES (APPOINTED)

Doug Ferris - Willsboro

Joel Harwood - Lewis

Megan Murphy - Elizabethtown

TBA - Essex

Dawn St. Louis - Westport

STAFF

Julie A. Martin

Executive Director

Cara Easley

Administrative Manager

BRASS Board Meetings are held on the first Monday of the month at 7:00 PM. Members are invited to attend. Call or email to confirm dates and location.

The BRASS newsletter is prepared by Cara Easley with written contributions from the staff, Board of Directors, and other contributors and edited by the staff and Board of Directors of the Boquet River Association, Inc. We invite your submissions, inquiries, letters, and memberships.

Please submit to:

info@boquetriver.org

Boquet River Association

P.O. Box 782

Willsboro, NY 12996

(518) 963-4710

ANNUAL MEETING AND BOARD UPDATES

BRASS held its Annual Meeting on Monday, December 1st at the Westport Library. Executive Director, Julie Martin gave a presentation highlighting 2008 activities and plans for 2009. Some 2008 accomplishments included seedling plantings, river clean-up/Trashy Art Day, and the ongoing culvert assessment project. Plans for 2009 include the production of historic ramble brochures, the watershed management planning process and updating the organization's strategic plan, as well as BRASS's annual events. At the Annual Meeting, members approved the reelection of At-Large Board Members Schelling McKinley of Westport and Tom Clark of Lake Placid. BRASS also welcomed Bryan Burke to the board, and looks forward to the appointment of Gayle Perry as our Essex Town Representative.

Bryan Burke and his spouse, Beverly, moved to Essex full-time in 2007. After graduation from the US Naval Academy, Bryan spent five years in the Navy Submarine Force. He earned his Master of Architecture degree from the Harvard Graduate School of Design, and he and Beverly own an architectural practice, PREMISES, in Essex. Gayle Perry and her husband own an organic crop farm in Whallonsburg where they raise hay, wheat, straw, corn, and soybeans. Gayle, a former BRASS board member, has a background in clerical and fundraising work, and loves to garden, knit, decorate, and sew in her spare time.

Since its beginning, some of BRASS's accomplishments include:

- ◆ planting over 270,000 seedlings and trees along the river for erosion and flood control, and wildlife habitat;
- ◆ building over 1200 feet of low-cost cribs, terraces and spillways;
- ◆ conducting studies in water quality, sediment embeddedness, aquatic insects, native mussels, and invasive plants;
- ◆ developing an erosion control booklet: "How to Hold up Banks: Using All the Assets;"
- ◆ designing riverside public access parks totaling over 600 acres;
- ◆ inventorying and managing invasive plants in the Boquet River Watershed;
- ◆ assisting in the redesign of FEMA Flood Zones;
- ◆ producing an educational watershed board game for local schools;
- ◆ helping towns examine alternative septic and sewerage disposal methods;
- ◆ initiating natural and historical tours to help the local economy;
- ◆ implementing pilot projects for invasive plant control and rain gardens for stormwater runoff control;
- ◆ partnering with local road departments to develop runoff controls;
- ◆ hosting "Rambles" to encourage people to explore the Boquet River Watershed;
- ◆ conducting the annual Boquet River Clean-up and Trashy Art Day; and
- ◆ facilitating the development of a Boquet River Watershed Management Plan.

BRASS GRANT AND PROJECT UPDATES

Empire State Development Corporation - Grant Update

In 2006, BRASS was awarded a \$150,000 grant from the Empire State Development Corporation to be reimbursed over a three-year period. The funds will help transform BRASS organizationally by promoting board development and strategic planning. BRASS's long-term stability will allow us to carry out its mission more efficiently and effectively bringing environmental and economic benefits to the Boquet River Watershed. In October 2008, BRASS submitted its eligible expenses from 2007 and received reimbursement in January 2009. Currently, we are in the process of compiling the report to submit our second voucher, which will include our eligible 2008 expenses.

Department of State Environmental Protection Fund - Grant Update

In 2008, the Town of Westport was awarded a \$50,000 matching grant from the Department of State (DOS) to prepare a Boquet River Watershed Management Plan. BRASS will manage the grant on behalf of the town. We are currently working with the DOS's Division of Coastal Resources staff to review, adjust, and finalize the project work plan and budget. Once complete, the town and the DOS will execute a contract. Then, BRASS and the Town of Westport will sign a Memorandum of Agreement that will outline our roles and responsibilities as they relate to the project.

Natural Heritage Trust Quadricentennial - Grant Update

In 2008, BRASS was awarded a \$1,000 grant from the Natural Heritage Trust, a division of the Office of Parks, Recreation and Historic Preservation of New York. The grant will be used to celebrate the upcoming 400th anniversary of the exploration of Lake Champlain and the Hudson River. BRASS will produce two historic ramble brochures and host two historic Rambles this spring—a canoe trip from the Willsboro boat launch to the mouth of the river; and a town walk through Wadhams, with an optional hike up Coon Mountain.

CWICNY Aids to Localities - Grant Update

The Champlain Watershed Improvement Coalition of NY (CWICNY) was formed in 2002 to "provide a coordinated effort to improve water quality and other natural resources within the NY Lake Champlain counties through project implementation." As a member of CWICNY, BRASS attends its monthly meetings along with County Soil and Water Conservation District staff and other representatives throughout Clinton, Essex, Franklin, Warren and Washington counties. In 2008, BRASS was allocated \$1,500 from an Aid to Localities grant awarded to CWICNY. The funds were used for Invasive Species Education and Outreach.

BRASS prepared an "Identification and Management Guide" for the highly invasive terrestrial plant, Japanese Knotweed. This plant spreads quickly and aggressively and is seen growing throughout the Adirondack Park and Champlain Valley, including the Boquet River watershed. The brochure assists landowners in understanding its origin, how to identify it, its habitat, how it reproduces, and various methods for controlling it. The brochure also encourages landowners to take action because the plant spreads very quickly and becomes more and more difficult to control. Stop by your local town hall or contact BRASS for a copy.

Boquet Land Trust - Project Update

BRASS has been working with a local attorney to create a new non-profit organization with the purpose of holding property. A three-plus acre parcel that serves as a beautiful swimming hole has been offered to BRASS, but will be owned by the proposed Boquet Land Trust (BLT). This and future BLT properties will be available for public use.



BRASS'S

Winter Rambles

All events subject to change. Call leader for up-to-date information.

BRASS continues its series of Rambles, which are informal excursions through the Boquet River Watershed led by board members and other friends of the association. These trips are meant to increase the public's enjoyment and appreciation of our natural treasures. All Rambles are free.

The Winter Ramble Series began on:

Sat., January 24th— 9:30 AM

Cross country ski with Bob McGoldrick on the Jackrabbit Trail from Rocky River .

Sun., February 1st—10:00 AM

Cross country ski with Schell McKinley to Owl's Head Lookout on the East Trail to Giant.

Sat., February 7th—7:00 PM

Snowshoe or cross country ski under the full moon with Alta Jo Longware on Steele Woods Rd. in Lewis.

Sat., February 14th—10:00 AM

Snowshoe in a Willsboro Middle Road wetland with Dennis Kalma.

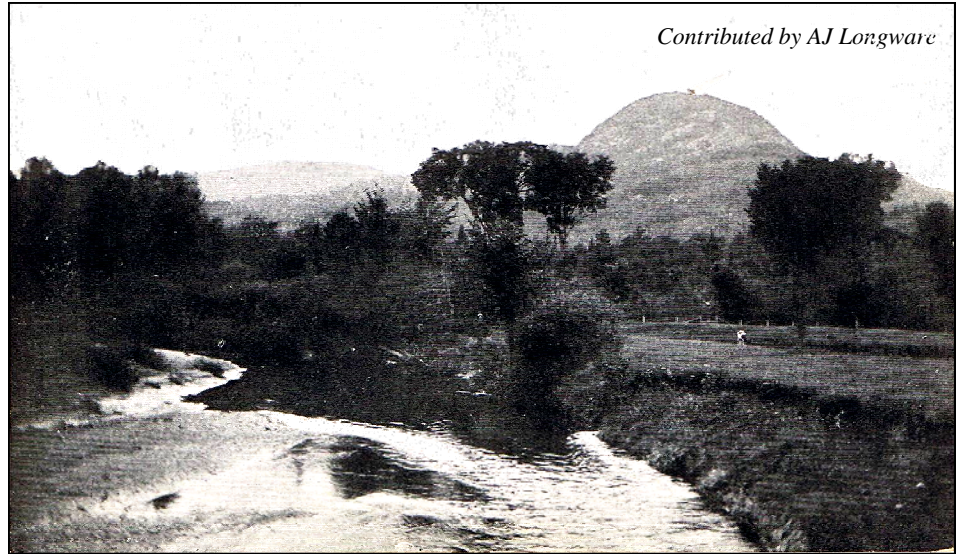
Sat., February 21st—9:00 AM

Snowshoe and identify wildlife tracks with Chris Maron of the Nature Conservancy and John Davis of the Adirondack Council. Meet at Black Kettle Farm in Whallonsburg (576-2082).

Saturday, March 7th—8 AM

Ski the Ausable Lake Road and hike/snowshoe up Sawteeth Mountain with Jay Fiegl. Meet at the Noonmark Diner. This ramble is for experienced hikers/skiers (963-7082).

WHERE ON THE BOQUET?



Contributed by AJ Longware

The back of the postcard reads: "This is the river, we feed the fishes in & the mountain is Cobble Hill, which I climbed last Tuesday. Behind the trees at the right hand edge of the picture is the house, but you can't see it, but it is there. The cow belongs to an old maid & is called Beauty". She was once Mac's teacher."

Answer: The picture is of Stanton Meadows in the center of Elizabethtown, near where the Chevrolet dealership is now located. There were school ball fields in the meadows and the clay banks on the river were a favorite swimming location for the town youth.

“MINK” BY EDWARD CORNELL



Mink are semi-aquatic generalist predators. They are vulnerable to trapping and to environmental contaminants in water, like PCB's and mercury. Predators may include bobcats, coyotes, fishers, and owls. Mink eat small fish, crayfish, frogs, and small birds and mammals. They can climb trees but more often travel water courses, and can swim distances under water. Their tracks are commonly seen in snow along streams—look for their tracks on winter Rambles!

BOQUET RIVER BRIEFS

Crowningshield Dam Removed

During the week of September 15th the Crowningshield Dam was removed from the North Branch of the Boquet River in the Town of Lewis culminating 8 years of planning, design, fundraising and partnering. The project was a cooperative effort by the Crowningshield Family, Essex County Planning Dept., Essex County Soil and Water Conservation District (SWCD), Essex County Dept. of Public Works, Trout Unlimited, Rivers United, NYS Dept. of Environmental Conservation (DEC), Natural Resource Conservation Service (NRCS), the Greater Adirondack Resource Conservation and Development (RC&D) Council, US Fish and Wildlife Service, and BRASS. The dam had been failing for years, causing concern for the county highway bridge just below the dam. Even though the dam was failing, it was still a barrier to fish access to over 6 miles of stream above the dam. This project was successful in protecting the county highway, while improving fish habitat and recreational resources.



The Crowningshield Dam prior to being removed.
Picture courtesy of Essex County SWCD

Black Ash Remediation Project Begun

After 15 years of planning, fundraising, permitting, and collaborating, the Black Ash Remediation Project in Willsboro has begun. The Black Ash Project has brought together the Essex County Planning Dept., Essex County SWCD, Town of Willsboro, NRCS, Greater Adirondack RC&D Council, NYS DEC and BRASS to remediate 12 acres of black ash waste left from a manufacturing site along the Boquet River. The 12 acres of waste is eroding into the river allowing the waste to move downstream into Lake Champlain. The project will first stabilize over 500 feet of streambank by a combination of rock and vegetation strategically placed along the bank after it has been regraded to reduce its steep slope. The second part of the project will create a wetland treatment area to help treat the effluent from the Town of Willsboro's sewage treatment plant. This part of the project will utilize the properties of the black ash, with the addition of wollastonite, to remove additional nutrients from the Town's already treated and sanitized effluent. This project will be another great step forward in the protection of the Boquet River and Lake Champlain and is expected to be completed by this time next year.

Willsboro Comprehensive Plan Begun

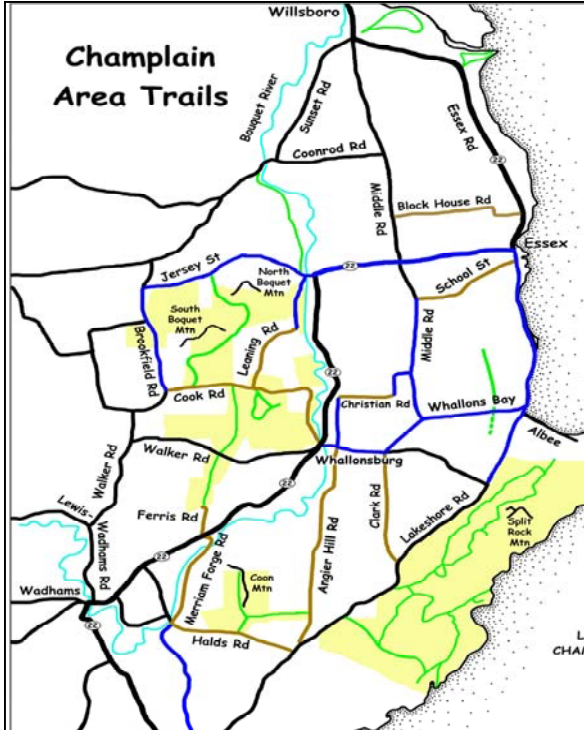
The community of Willsboro has started the process of updating the Town's comprehensive plan. A comprehensive plan identifies what the community looks like now, what it should look like in the future, why it should be done, and how the town intends to get there. BRASS submitted a Notice of Interest form to the Town, and we look forward to participating in this collaborative process.



BRASS to plant seedlings on this eroded riverbank in 2009
-Merriam Forge Rd., Westport-

Trail System in Boquet River Watershed

Chris Maron



Map by Sheri Amsel for Champlain Area Trails (CATs)

Two groups are working to develop trails in the Boquet River Watershed. Champlain Area Trails, Inc. (CATs) organized over a year ago with a purpose of establishing a trail system that connects Lake Champlain to the Adirondack Mountains. With that as a long-term goal, the group has focused on the potential trail system linking Westport and Essex. CATs board member, David Reuther, said “The trail will be a loop that has an eastern route going through Coon Mountain and Split Rock Wild Forest; the western trail passes over Boquet Mountain, goes along a series of beaver dams working southward toward Route 22 and Little Falls. From there it can connect to Coon Mountain and back to Westport.”

The CATs trail system already has miles of trails on land open for public use. The land is owned by the Eddy Foundation, Adirondack Land Trust, New York State and several private landowners. Maps of the trails are available from the CATs website www.champlainareatrails.com.

The northern extension of the trail system is in Willsboro at the Town’s Noblewood Park and The Nature Conservancy’s Big Woods on the Boquet River Preserve. As The Conservancy seeks a more local owner of Big Woods, it has helped form the “Friends of Big Woods” to develop the trail network within the 104-acre nature preserve. “We’ve already had several work projects that have put much of the trail system in place,” said Laura Smith who organized the Friends group. “We plan to have the trails finished this summer so that people can walk in the diverse natural habitats along the Boquet River and the upland forests.” CATs has hikes and trail projects scheduled on the third Saturday of every month. To learn more about CATs and Friends of Big Woods, please contact Chris (Adirondack Nature Conservancy) at 576-2082 or cmaron@tnc.org.

Our Hidden Business Resource

Stephen Brooks , Greenbarter Founder

BRASS hasn’t spent any cash for printing or mailing its last four newsletters, including the one you’re holding! Two years ago, the Boquet River Association joined Greenbarter (GNB), a barter network for businesses (greenbarter.com). Greenbarter members do business with each other in the same way as all of their other customers, except when it comes time to pay. In the Greenbarter economy, buying and selling is completed with *Greenbarter dollars*. They are on par with US dollars, and members receive a monthly statement reflecting all of their buying and selling activities with other network members. A 7% transaction fee is due, in cash, after the month’s business has been reconciled. This covers the cost of operating the network. BRASS receives GNB dollars in two ways: first, it can sell memberships to GNB members; secondly, it can receive charitable, tax-deductible contributions of GNB barter dollars from any member, because of its 501 (c) 3 status. Such donated sums are matched by Greenbarter’s Community Partners Programs. BRASS paid for its last three newsletter issues with GNB barter dollars, resulting in a substantial increase of retained balance sheet and checkbook cash. Of course, many other buying opportunities are available to GNB members because of a broad diversity of goods and services available through the network. Surprisingly, many organizations invited to join GNB are not as wise as the BRASS Board of Directors. They say; “We can’t afford it.” We just chuckle and continue to grow our network. If you know a business looking for more customers or a community group worthy of increased revenues ...send them to greenbarter.com.

BRASS Joins Forces to Improve Boquet Fishery

In late August 2008, the Boquet River Association joined forces with the U.S. Fish and Wildlife Service (USFWS) and the Essex County Soil and Water Conservation District (SWCD) to launch a watershed-wide culvert assessment project to improve the Boquet River fishery. Brook trout and other fish species travel up and down our river to feed and spawn but unfortunately face obstructions that can inhibit their movement. During flood events, for example, when fish are forced downstream, a barrier will prevent them from returning to their upstream habitat. It is these barriers that fragment the fishery and decrease its ability to support game fish. The goals of the Culvert Inventory Project are to identify and gather baseline data on culverts and to prioritize them based on their importance to fish travel. This information will be critical in our effort to secure funding to replace or retrofit high-priority culverts in the watershed. By replacing or retrofitting these fish barriers, we will improve our fishery, the riparian habitat in general, and increase the number of fishermen/women contributing to our local economies.



This culvert, where Slide Br. joins The Branch in Elizabethtown, has an 8+-inch vertical drop.

BRASS and the Essex County SWCD submitted a project proposal to the USFWS. Field assessment includes getting GPS (Global Positioning System) coordinates and data on drop, condition and flow rates of culverts in the watershed. Both organizations committed to completing the watershed-wide culvert assessment and many staff-time hours have already been dedicated to the project. The culverts are assessed based on the Lake Champlain Fish Passage Initiative 2008 Report prepared by SUNY Plattsburgh and the Lake Champlain Sea Grant program. We especially thank the Warren County SWCD staff, who recently completed a similar project in the Lake George basin, for training us to use the GPS unit, and providing guidance on how to best manage the data collected.

Although culverts and bridges are built to convey water under roads effectively to ensure safe human travel, we are already finding in our survey that many culverts were installed in a way that unnecessarily inhibits fish travel, particularly brook trout. By December, we had located and assessed 71 sites, of which 14 were recorded as having an 8+-inch vertical drop from the culvert to the riverbed. Such a large drop is highly unfavorable to fish passage. However, replacement of a particular culvert is dependent on many factors including downstream barriers, upstream habitat and whether it is suitable for fish, the number of miles that would be opened for fish passage, landowner approval, as well as local, county and state support and assistance.

The field assessment work has been a great opportunity for BRASS and Essex County SWCD staff (all new to the region) to learn more about the watershed, street and tributary names. In addition, we are excited to build working relationships with private landowners, local Towns, Essex County, and NYS by working with them to replace and/or retrofit high-priority culverts in their jurisdiction. Other project partners include the Nature Conservancy and Trout Unlimited. We look forward to working together to begin constructing fish-friendly culverts in 2009.

BLACK SWALLOW-WORT

The Newest Threat to our Local Economy and Environment

QUICK FACTS

- Pasture, cropland, and tree farms are at risk
- Organic farms are at elevated risk — eradication generally requires herbicide treatments!
- The Boquet River landscape is prime habitat for the spread of this aggressive invasive
- First found locally near the Boquet River in Elizabethtown



ATTENTION VOLUNTEERS

A very serious new threat has been identified in the area that will have a direct impact on our agricultural, forestry and tourism economy in the area if we do not act fast this summer! **We need BRASS volunteers to help us with Early Detection surveys in the summer of 2009.**

DESCRIPTION

Black swallow-wort is a perennial, twining herbaceous vine that grows in clumps of several to many stems forming extensive patches. The leaves are oval shaped with pointed tips, 3-4 in. long by 2-3 in. wide, and occur in pairs along the stem. The small, five-petaled star-shaped flowers are dark purple to almost black with white hairs, about ¼ in. across, and are in clusters. The fruits are slender tapered pods, 2 to 3 in. long by about ¼ in. wide, turning from green to light brown as they mature.

ECOLOGICAL THREAT

Because black swallow-wort forms extensive patches that crowd out native vegetation, old field habitats of goldenrod and grasses can be replaced almost entirely, completely changing their physical structure. A preliminary study of impacts on grassland birds in New York suggests that as coverage by a sister species of swallow-wort (pale swallow-wort) increases, grassland bird presence declines. Investigations into impacts on the monarch butterfly, which requires milkweeds for reproduction, indicate that the butterfly will cue into black swallow-wort and lay eggs, but the larvae do not survive. To the west of the Adirondack Park, the globally rare alvar ecosystems (limestone pavement barrens supporting unique plant communities) are threatened by many rapidly expanding swallow-wort populations in Jefferson County, New York. To our east, black swallow-wort threatens to displace Jessop's milk vetch, a federally listed plant, on the banks of the Connecticut River valley in central Vermont.



BLACK SWALLOW-WORT CONTROL AND CONTACT INFO

There are two species of swallow-wort threatening the Adirondack Park though it is the black swallow-wort that was found near the banks of the Boquet River at the corner of Route 9N and Lincoln Pond Road within the hamlet of Elizabethtown in August of 2008. Multiple patches of black swallow-wort are on both sides of Route 9N once you cross over the Boquet River. Steven Flint from the Nature Conservancy's Adirondack Park Invasive Plant Program (APIPP) says, "As these swallow-wort patches were already developing seed pods when we validated them on August 14th, 2008, we returned within 24 hours to begin cutting and bagging up the plant material. I then sprayed the freshly cut vine ends and stems with the appropriate herbicide for that infestation. As the swallow-worts are very resistant to herbicides we re-inspected the patches after Labor Day, found several of them regenerating seed pods again, and implemented a second, cut-n-spray treatment." Landowner permission was acquired before any control methods were implemented. Steven is a fully certified NYS Department of Environmental Conservation commercial pesticide applicator.



Note the size of the flower in relation to the leaves.

If you find swallow-wort, contact Steven directly for the proper response method (sflint@tnc.org or 518-576-2082) because **mowing black swallow-wort, even several times a year, will not kill it.** However, mowing can be employed to prevent a seed crop. Cutting is most effective at preventing a mature seed crop if done early to mid-July, when there are small, immature pods on the plants. Cutting during the flowering period but before pod formation will allow plants to recover and still produce a viable seed crop. Monitor mowed areas and mow a second time if pods reach mature size in late summer or early fall. **Hay crops infested with swallow-wort and then sold elsewhere can be a means of introducing swallow-wort to new areas if cutting is not timed correctly.**

BRASS's 2008 Seedlings

On May 10, 2008, BRASS and volunteers planted over 1,000 riparian buffer seedlings on John and Melissa Pierce's dairy farm in Wadhams. The before picture below shows the site shortly after volunteers completed the project, with red flags marking the proposed fence line. The after picture, taken on July 26, 2008, demonstrates the effectiveness of the electric fence installed by the landowners. The fence blocked cow access to the seedlings, giving them the opportunity to establish. BRASS will continue to monitor the vegetative buffer, and in time, we hope to see the trees and shrubs thrive to help stabilize the bank, control erosion, improve streambank aesthetics, and provide wildlife habitat.

Before



After



BRASS MEMBERS 2008-2009

Membership Year: June 1, 2008—May 31, 2009 (*as of 1/12/09*)

*Special thanks to our generous donors

Adirondack Council	Anita & John Deming*	Dave Kavner	Alan Hipps & Jane Preston*
Adirondack Nature Conservancy	Therese Denton*	Steven & Helen Kellogg*	Seymour Preston, Jr.
Sheri Amsel	Stanley Dickinson	Linda Smyth & Jeffrey G. Kelly*	Patricia K. Quinn
Ellen Few Anderson	Kathie Donovan	Mary Lu Kirsty	Sue & Clay Reaser
Anonymous*	Mary & David Downs	Hannelore Kissam*	David & Margaret Reuther*
Bartlett & Isabelle Bailey	Nancy B. Sinkoff & Gary Dreiblatt	Philip & Eileen Knowles*	Mary Dulac-Reynolds*
Eve & Nick Bailey*	Eva M. Eaton*	Elenor & Louis Koenig	James & Mona Rice
William T. Baker Jr.*	Joseph & Maureen Ecclesine	Joseph Kozma*	Rob Rich
Larry Barns	Eddy Foundation	Ruth Kuhfahl	Rogers-Carrol Family Foundation
Rudolph Beardsley	Lew & Mary Jane Egglefield	Mark Kupperman*	Cordelia Sand
Jim Kinley & Mary Bell	John & Susan Eisley*	John & Myrtle Lally	Arthur V. & Harriet Savage*
Katherine Preston & John Bingham*	Essex County Adirondack Garden Club	Elizabeth W. Lawrence*	N. Hale & C. Schafer
Boquet Foundation*	Douglas R. Ferris—Zebra- Tech, L.L.C	Franz S. Leichter	Herb & Denise Scheinberg*
Anthony Brankman*	Jay & Kristin Fiegl	Phil Underdown & Nadine Lemmon*	John R., John H. Doyle & Laura Sells-Doyle
Ben & Anne Brewster	Matt Foley*	Sandy & Barbara Lewis*	Mrs. Shirley Bacot Shamel*
Elizabeth D. Brooks	Terrence & Susan Foley*	Richard & Sally Lighty*	John J. Sheldrake
Marcia P. Brooks	Walter & Augusta Gladding	Brad Caldwell & Alta Jo Longware*	Steve & Melissa Shepstone*
Peter R. Brooks	Mr. & Mrs. Morris Glenn	Gretna & Melvin Longware	Dr. Frank C. Shirley*
Stephen C. Brooks	Maggie Bartley & Harry Gough*	Craig Lyman—Integrated Mailing Systems*	Elinor Siner*
William P. Brooks*	William & Mary Graff*	Alvin Macomber	Suzanne Skidmore & Marc Skarshinski
Alan & Marion Brown*	Paul Grinwis	Happy & Jim Marsh	Rolf Skoglund
Mark Buckley*	William & Marsha Harbison	Julie A. Martin*	Dustin & Katy Sleeper*
Bryan & Beverly Burke	Gregory & Kathleen Harper	L. Allen & Audrey Masterson	Gerald W. Smith*
Tim & Mary Burke	Jeb Hart*	Shami & Dan McCormick*	Donna Lou Sonnett*
Paula J. Calkins	Dr. Austen Hayes	Bob & Elaine McGoldrick*	Pierre Boutan & Caryl Stewart
Charles W. III & Margaret Cammack	Christina Coyne & Fanning Hearon*	Schell & Annie McKinley*	Kathy & Ted Taylor
Candace King Weir Foundation*	Judith F. Heintz	Robert W. McShane*	Betsy & David Tisdale
Dean & Claudia Caveney	James J. Higgins	Mr. Thomas Mendl	Kip & Delia Thompson
Cindy Dunbar & Charlie Cerf*	Wallace J. Huston	Mrs. Constance A. Miller*	Sylvia Thorn
Champlain National Bank*	Arlen F. Hutchins	Vinny & George McClelland The Mountaineer*	Carrie Treadwell*
Gary Chilson*	Arlene D. Ida	Kathy Kelley & Paul Mudie	Sandy & Libby Treadwell*
Tom & Alison Clark	International Paper*	Carol & Nick Muller III*	Langka Domberger & Zach Treadwell*
Antonia Bullard & Thurston Clarke	Francisca Irwin*	Lauren Murphy*	Newman & Frances Tryon
Edward Cornell—Crooked Brook Studio*	Robert & Amy Ivy	Eric K. Teed & Megan A. Murphy*	Al & Robin Ulmer
Sid & Ruth Couchey	Robert Jeffrey*	NYCO Minerals, Inc.	Jim & Colleen VanHoven
Mark C. Bonfey & Darren R. Darrah	N. Eric Johanson—Johanson Dielectrics Inc.*	Peter S. Paine Jr.*	Eddie Mrozek & Nancy VanWie
Michael & Laurie Davis	William & Meredith Johnston	Jeanne Fallon & John W. Pangburn*	Baird & Dorothy Voorhis
Dr. James C. Dawson*	Charles Jones	Edward & Meredith Parsons	Eugene E. Webster*
James & Nancy Dawson*	Deb & Ellis Jones*	Lee & Peter Petty	Katherine & William Wellman
Marc Atz & Bobbi Degnan*	Liz Jones	Maurice C. Poitras*	Peter & Polly White*
	James & Theresa Kapper		Kathleen Wiley
			Mark & Pola Yolles

Stay tuned and get involved!
Some 2009 BRASS activities include
Summer Rambles
River Clean-Up / Trashy Art Day
Seedling Plantings
Black Swallow-wort detection surveys
Watershed Management Planning Process

BRASS had an educational display at the following outreach events in 2008:
 Mountaineer Trail Run - 6/21
 Essex County Fair - 8/13 - 8/17
 Otis Mountain Festival - 8/15-8/16
 Field, Forest and Stream Day - 9/20

Professional Training and Workshops attended:
 "Board Transformation: Recruit, Restructure, Re-energize" seminar - 5/29/08
 "The Importance of Vision, Mission, & Planning for Organizational Growth"
 workshop – 10/3/08
 Stormwater Tradeshow and Conference - 10/16/08
 "QuickBooks Intermediate Skills" class - 1/14/09

As a partner organization, BRASS regularly attends the following meetings:
 Champlain Watershed Improvement Coalition of New York (CWICNY)
 Adirondack Park Invasive Plant Program (APIPP)
 Essex County Water Quality Coordinating Committee
 Willsboro Comprehensive Planning Process

Please make checks payable to the Boquet River Association. Your membership is tax-deductible as a charitable contribution.

Name _____

Email _____

Local Phone _____ Winter Phone _____

Address _____

City _____ State _____ Zip _____

Winter Address _____

Winter City _____ State _____ Zip _____

_____ Atlantic Salmon	\$50
_____ Brown Trout	\$35
_____ Speckled Trout	\$25
_____ Minnow	\$10

Please complete and return this form to:
 Boquet River Association
 PO Box 782, Willsboro, NY 12996.
 Updated information may also be emailed to:
 info@boquetriver.org



WATER TESTING



Total Coliform and E. Coli testing bottles, provided by Life Science Laboratories (LSL), are available at the BRASS office, Dogwood Bread Company in Wadhams, Cornell Cooperative Extension in Westport, and local town halls. Contact BRASS in advance to find out which bottle to use. For more technical questions, contact LSL at 315-388-4476. Once you have your sample, keep it cool and **bring it to the Elizabethtown Town Hall any Tuesday morning by 9:30 AM.** For those individuals and communities who find it more convenient to drop samples off in Plattsburgh, contact Endyne Lab to arrange for bottles and testing at 518-563-1720.



BRASS

The Boquet River Association, Inc.
3743 Main St.
P.O. Box 782
Willsboro, NY 12996

Non-profit Org

US Postage

PAID

Burlington, VT

Permit 165

Newsletter of the Boquet River Association, Inc. | February 2009 | Winter Issue

Not on BRASS's email list?

Now that our computer and software has been updated, we are eager to improve our electronic communications. If you would like to be notified via email about meetings, events and volunteer opportunities, please email info@boquetriver.org and request that your name be added to our email list.

Tel./Fax. 518.963.4710

info@boquetriver.org

www.boquetriver.org

BRASS is a grassroots non-profit organization dedicated to enhancing the quality of water and life in the Boquet River Watershed.